



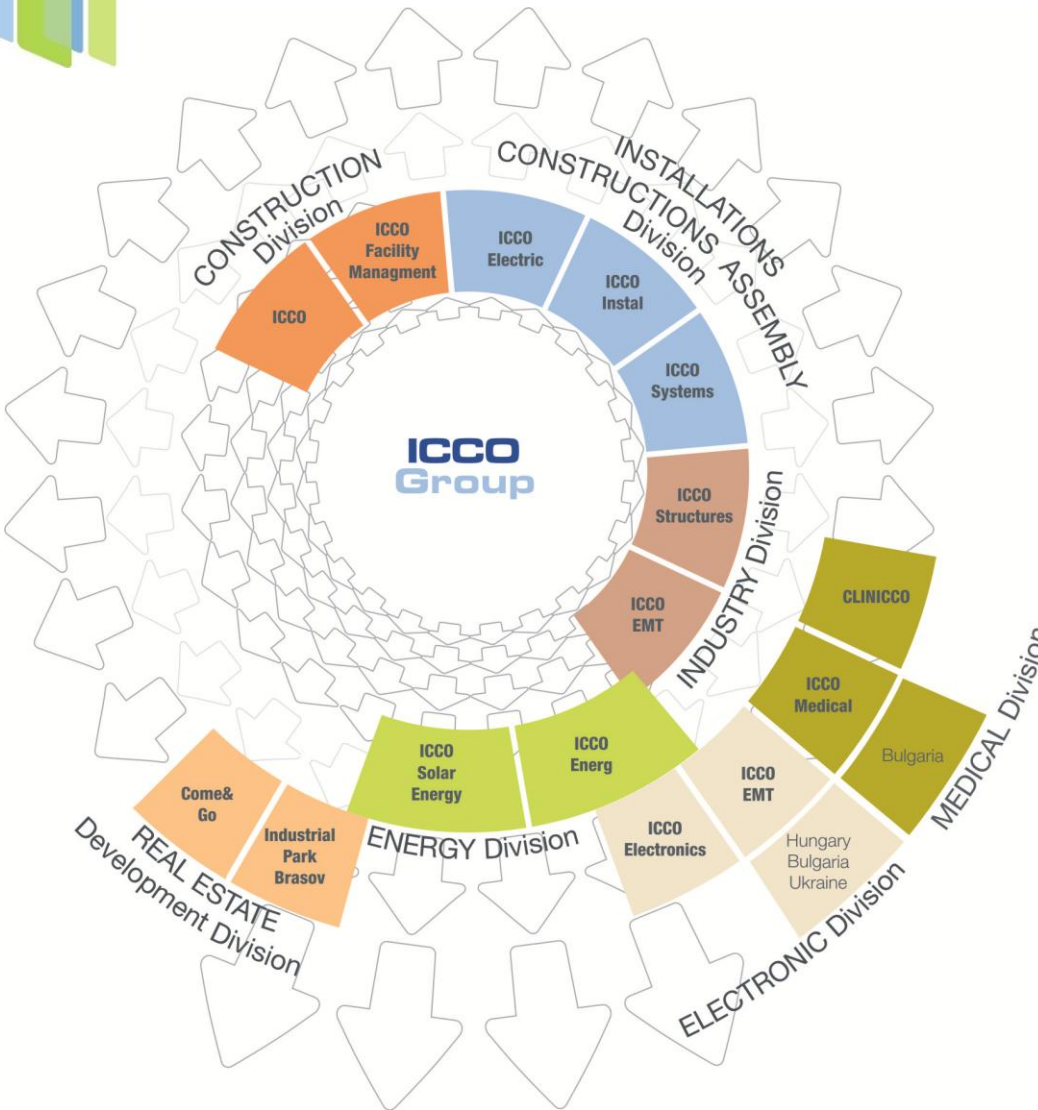
MORE OPTIONS IN CONSTRUCTIONS

**MORE REASONS
TO ENJOY YOUR BUSINESS**

ICCO[®]
www.icco.ro

GENERAL CONTRACTOR FOR INDUSTRIAL AND CIVIL CONSTRUCTIONS

ICCO organization



REAL ESTATE DEVELOPMENT Division

- **Industrial Park Brasov** - greenfield production halls and office areas for rent
- **Come & Go** - commercial and office areas for rent

ENERGY Division

- **ICCO Energy** - sales of energy;
- **ICCO Solar Energy** - production of electric energy by photovoltaic panels

INSTALLATIONS & CONSTRUCTION ASSEMBLY Division

- **ICCO Energy** - general contractor for electric projects of low, medium & high voltage
- **ICCO Instal** - general contractor for sanitary installations and HVAC, wastewater treatment plants
- **ICCO Systems** - supplier of security solutions, access control, fire detection, BMS systems

INDUSTRY Division

- **ICCO Structures** - producer of metal structures, industrial equipments and glazing
- **ICCO EMT** – SMT production small batches

ELECTRONIC Division

- **ICCO EMT** - supplier of equipment and services for the electronic industry
- **ICCO Electronics** - integrator of telecommunication and IT projects

CONSTRUCTION Division

- **ICCO** - general contractor for industrial and civil constructions
- **ICCO Facility Management** - construction works and facility management

MEDICAL Division

- **CLINICCO** – private supplier of medical services
- **ICCO Medical** – distribution of medical and special defense equipments

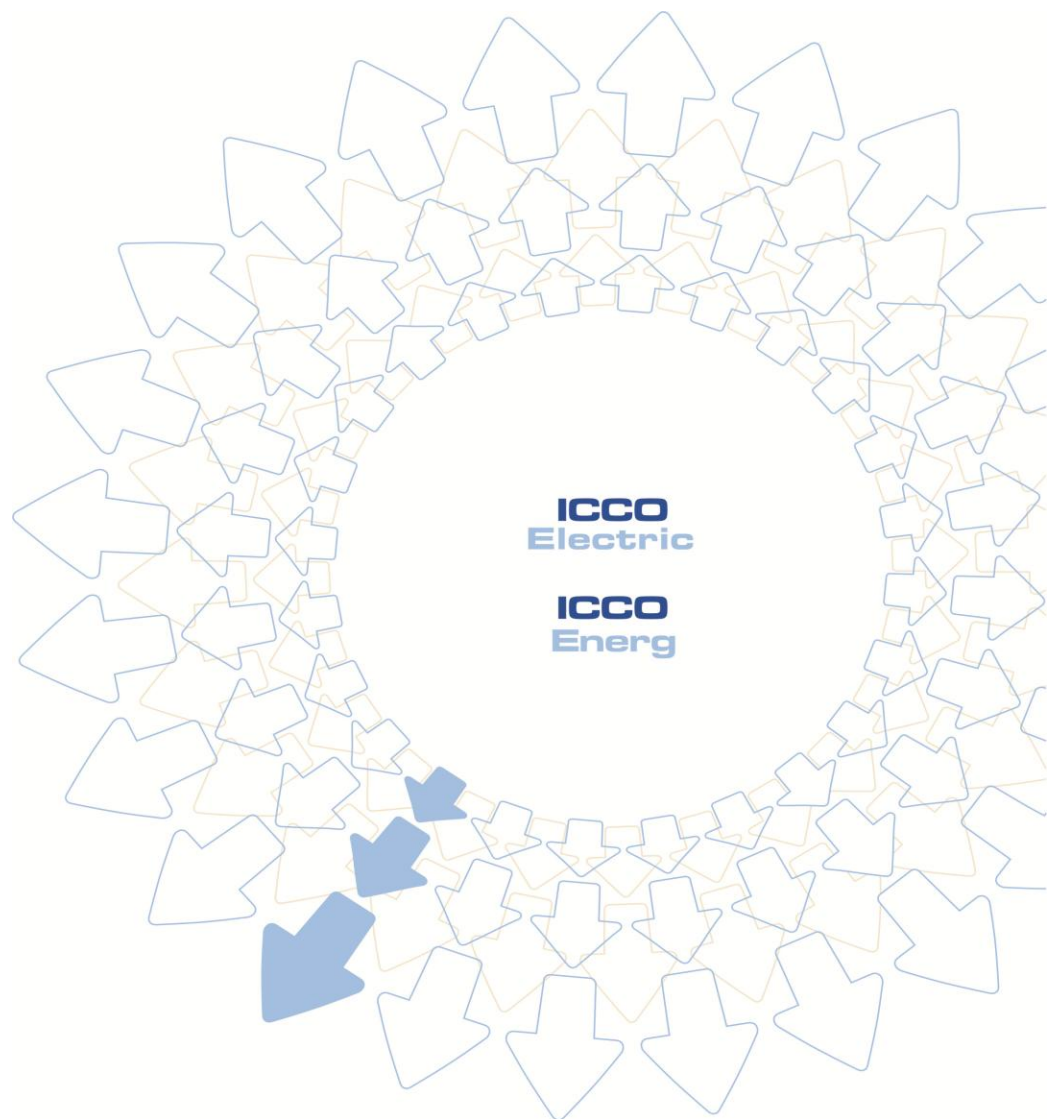
Enjoy your business!

ICCO Energy has been established as a limited liability company, in 2007, having as main activity object the **supply of electrical energy**. **ICCO Energy** continues the activity initiated within the electrical power supply department of **ICCO Electric**, taking over the experience and the personnel specialized after developing this activity since 2006 on the Romanian Energy Market. **ICCO Energy** also develops its activity in design and execution of low, medium and high voltage installations, as well as of industrial automation systems.

Representative customers such as Siemens and complex projects for Pirelli, Carrefour, Industrial Parks, Kronospan, Schaeffler, Romanian Airports or High Voltage Power Station beneficiaries, such as ELECTRICA, **ICCO Energy as Romanian integrators of services in the field of electrical installations and equipments.**

ICCO Energy competences:

- General contractor-ship for electrical installations;
- Lighting systems and airfield lighting;
- Industrial automations;
- Electrical panels manufacturing;
- Building Managements Systems;
- Trade with electrical equipment;
- Electrical energy distribution;
- Maintenance and service for high, medium and low voltage networks and transformer stations
- Design, execution and maintenance of photovoltaic installations, windmills, Smart Grid Concept implementing.
- cogeneration stations;
- gas installations;
- feasibility studies; energetic audits;



Enjoy your business!

Also a member of the ICCO Group of companies– **ICCO Instal provides more than technical-sanitary installations for the industrial, commercial and infrastructure areas.**

The project management, consultancy and the full implementation describe the business activity of ICCO Instal as an integrator in the field of technical-sanitary installations.

Actually, the partnership with ICCO Instal simplifies the project development, guarantees terms due to highly skilled personnel and avoids increase of costs by a complete integration of the project within the company .

ICCO Instal's main abilities are the design and execution of:

- plumbing installations;
- HVAC installations;
- gas installations;
- water adduction installations;
- rainwater and sewage installations;
- waste water treatment plants.



Electrical panels manufacturing

Over seven years of experience in assembling and equipping electrical panels recommend ICCO Energ as manufacturers of electrical panels for currents up to 7.200 A included (S8 SIVACON fabrication license, authorized by SIEMENS, "Modan" fabrication license, authorized by EATON,).

ICCO Energ integrate high, medium and low voltage distribution panels and automation panels (Kronospan, Preh, Pirelli, Continental, Electrica substations). The distribution panels workshop is certified by CertROM (electrical panels up to 4.000 A), Schneider Electric, Eaton and Siemens (electric panel producer certificates) and holds "Prisma Plus" Schneider, "Modan" Eaton and "Sivacon" Siemens fabrication licenses.

The distribution panels are manufactured and equipped according to the SR EN 60439-1 standard. The main types of distribution panels made by ICCO Energ: main low voltage distribution panels, secondary distribution panels, control panels and automation panels.

Manufactured distribution panels :

- Primary switching devices of high power for nominal currents up to 7.200 A;
- Devices for measuring and monitoring power parameters;
- Secondary switching devices for monitoring and control;
- PLCs, I/O interface modules, network active equipment;



Trade with electrical equipment

ICCO Energ integrates the distribution of electrical equipment and materials through the shops, located in Timisoara, Bucharest and Brasov. ICCO Energ is distributor of Eaton, Siemens, Schneider Electric, ABB, Obo Bettermann, a.s.o.

Electrical energy supply

As a service integrator and turn-key solutions supplier, in 2006 ICCO Electric obtained the ANRE license for the supply of electrical energy.

One year later , ICCO Energ has been established, taking over and developing the electrical energy supply business. ICCO Energ is also owner of the medium and low voltage networks and transformer stations of the ICCO Industrial Park in Brasov and Industrial Park in Prejmer.

The proof of the capability and seriousness of **ICCO Energ** are its 170 clients, with whom we have concluded contractual reports for the supply of electrical energy and whose monthly consumption is of approximately 24.000 MWh, meaning 288.000 MWh in a year.

BMS

ICCO Energ, integrates competences into designing BMS (Building Management Systems), supplying the necessary equipment, installation, configuration, commissioning and also training of personnel, maintenance and service. The BMS allows monitoring the status of any subsystem of the building and its programming in order to optimize power and heat energy consumptions.

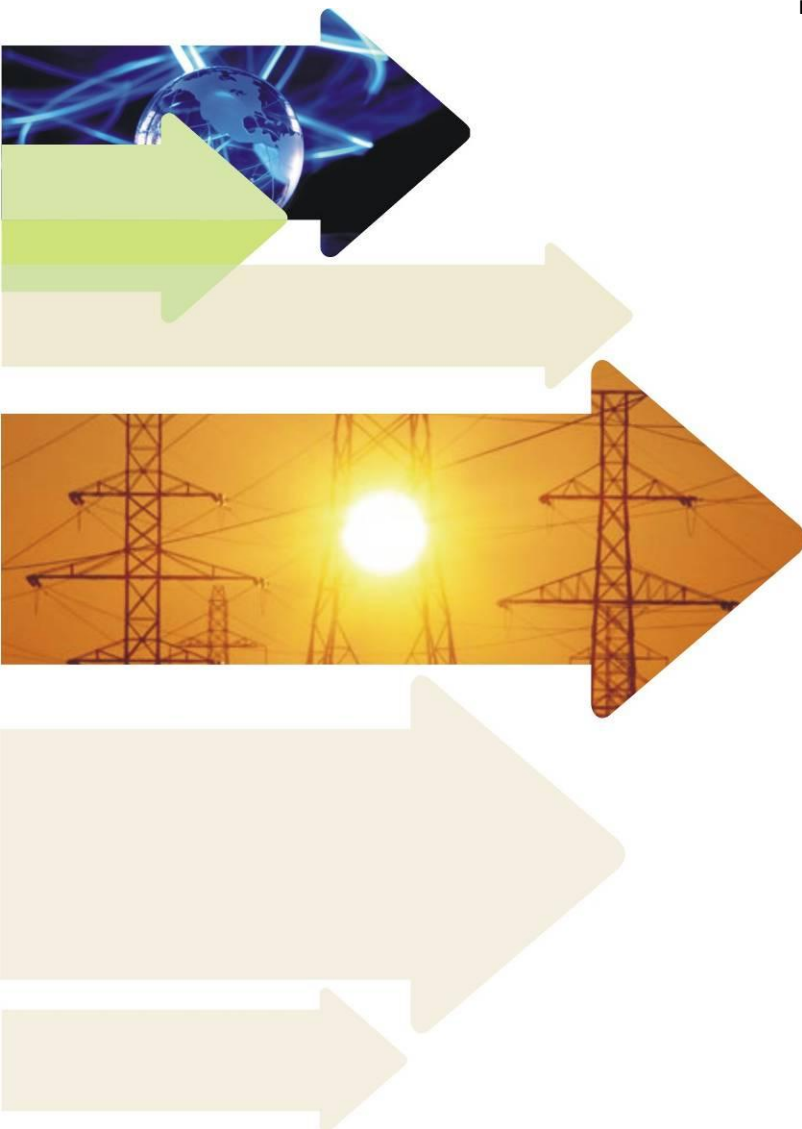
Industrial automations

The offer of ICCO Energ includes control systems for transformer stations and units and automations for continuous processes as water, gas, air . (SCADA solutions).



ICCO Energy achieved over the years all the certificates and approvals necessary for the participation on the competitive electrical energy supply and distribution market and for the design and execution of low, medium and high voltage installations and mechanical installations:

- ISO 9001:2008; ISO 14001:2005; ISO 18001:2008; ISO 27001:2006;
- License for the supply of electrical power issued by the Romanian Energy Regulatory Authority (ANRE).
- AACR (Romanian Civil Aviation Authority) – approval certificate for activities and services related to civil aviation.
- Product and service supplier: Acceptance Certificate issued by CN TRANSELECTRICA SA
- Type B attestation for the “designing and execution of interior electrical equipments for civil and industrial constructions, aerial and underground connections, at a nominal voltage of 0, 4 kV” (ANRE).
- Type C1B and C2B attestation for the “design and execution of aerial or underground electric lines, with nominal voltages of 0,4 kV ÷ 110 kV and transformer stations with the nominal superior voltage of at most 20 kV”(ANRE)
- Type D1 and Type D2 attestation for designing and execution of aerial electrical lines (voltage 110kV-400kV) and underground electrical lines (voltage 110kV-220kV).
- Type E1 and Type E2 attestation for designing and execution of electrical substations and electrical installations of power plants.(ANRE)
- Type PDS and PDI attestation for design and execution of natural gases distribution systems.
- Type EDS and EDI attestation for design and execution, control and maintenance of natural gases exploitation systems, with pressure lower or equal to 6 bar.
- CNCAN (National Committee for Nuclear Activities Control) authorizations for design, execution and services of electrical low, medium and high voltage installations in the nuclear area
- NATO certificate NCAGE 1F84L



ELECTRICAL SUBSTATIONS 110 /20 kV for public and industrial distribution

ICCO Energ offered consultancy, design, certification, construction works, 110 kV and 20 kV underground connection, protection and secondary circuits panels, automation, commissioning, exploitation, maintenance, electrical energy supply for several high voltage substation in Romania:

110/20 kV ICCO Industrial Park Brasov transformer station

2 transformers 1 x 16 MVA +1 x 25 MVA

Execution period: 10 months in 2008

Investment value: 4 million Euro



110/20kV Pirelli Tyres Slatina Station with 2 transformers of 25 MVA

•110/20 kV substation Protection and secondary circuits panels

Execution period : 4 months in 2010

Contract value: 1 million Euro

110/20kV turnkey substation INA Schaeffler Brasov Station

2 transformers of 40 MVA

Execution period: 10 months in 2011

Contract value: 3.3 million Euro



110/20 kV Harman and 110/20/6 kV Bartolomeu substations in Brasov

• Harman Substation: 2 x 25 MVA transformers;

• Bartolomeu Substation: 2 x 25 MVA transformers;

Execution period: 10 months in 2009

Contracts Value: 8 million Euro

Modernization of 5 110/20 kV substations in Slatina for the national water-electricity producer Hidroelectrica:

• 5 transformers 2x 25 MVA

Execution period: 2.5 months in 2009

Contracts Value: 5 million Euro



ELECTRICAL SUBSTATIONS 110 /20 kV for industrial distribution

110/20 kV ICCO Industrial Park Brasov transformer station

ICCO Energ

- Consultancy
- Design
- Certification
- Construction works for 110/20 kV substation
- Underground connection 110 kV and 20 kV
- Protection and secondary circuits panels
- Commissioning



ICCO Energ – Licensed distributor by ANRE

- Exploitation
- Maintenance
- Electrical energy supply

Capacity:

- Trafo 110/20 kV 1 x 16 +1 x 25 MVA

Execution period: 10 months

Investment value: 4 million Euro



ELECTRICAL SUBSTATIONS 110 kV/MT for public energy distribution

110/20 kV Harman and 110/20/6 kV Bartolomeu substations in Brasov

ICCO Energ - subcontractor

- Construction works;
- 110 kV, 20 kV and 6 kV aerial and underground connections;
- Protection and secondary circuits panels;
- Commissioning;



Capacity

- Harman Substation: 2 x 25 MVA;
- Bartolomeu Substation: 2 x 25 MVA;

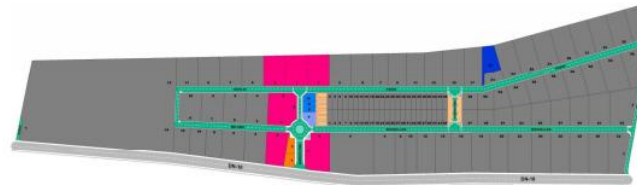
Contracts Value: 4 million Euro



Industrial Park Prejmer Halls for rental.

ICCO Energ accomplished the electrical medium voltage installations for the already built halls. The 20 kV medium voltage distribution in ring and the 20/0,4 kV transformer point have also been executed by ICCO Electric and ICCO Energ.

ICCO Energ is the administrator of the electrical network of the **Industrial Park Prejmer** composed from the medium and low voltage network, which supplies a number of 28 consumers.



CLASIFICATION	AREA	N° PLOTS OF LAND	PERCENTAGE(sqkm)
INDUSTRIAL	666.759,44 sqkm	111	91,68 %
COMMERCIAL ZONE	52.873,80 sqkm	6	7,27 %
OFFICES	2.798,00 sqkm	3	0,24 %
HOTEL	1.727,00 sqkm	1	0,24 %
PETROL STATION / SERVICES	3.089,00 sqkm	1	0,42 %
TOTAL sqkm PLOTS OF LAND PARK	727.247,24 sqkm	124	87,60 %
ELECTRIC SUB STATION	5.054,51 sqkm		0,61 %
STREETS	55.089,75 sqkm		6,64 %
PARKINGS	42.840,49 sqkm		5,16 %
TOTAL sqkm PARK	830.231,99 sqkm		100 %



ICCO Energ accomplished several medium and low voltage installation for large projects, designing, executing, commissioning and offering maintenance for the energy supply medium voltage networks, the 6.300 A electrical panels and the low voltage electrical panels and installations. ICCO Energ offered its services for **Stabilus, Hutchinson, Fresenius Kabi, Celestica, Flextronics, Industrial Parks, Premium Aerotech, J.F Furnir, Europharm, Pemstar, Mediplus , Shopping Centers, Howard Johnson Hotel**, and many others, but we would name:

SCHAEFFLER ROMANIA:

- The electrical low and medium voltage installations for 7 plant modules – from 2003 to 2010

Contracts value: 17 million Euro

PIRELLI TYRES ROMANIA:

- The electrical low and medium voltage installations for 200.000 sqm area– from 2004 to 2012

Contracts value: 15 million Euro

KRONOSPAN ROMANIA:

- The electrical low and medium voltage installations for the Brasov plant – from 2008 to 2009

Contracts value: 8 million Euro

TMD Friction ROMANIA:

- The electrical low and medium voltage installations for the Brasov plant – in 2008

Contracts value: 3 million Euro

ICCO Energ is also owner and operator of the 20 kV distribution rings inside the Brasov and Prejmer Industrial Parks.



PIRELLI TYRES SLATINA

In 2005, ICCO Electric, as electrical installation contractor, started its activity at the Pirelli Tyres plant in Slatina, offering together with ICCO Energ throughout the years a complete package for electrical installations execution works and maintenance services for the medium and low voltage network and also for Pirelli Tyres transformer station.

ICCO Energ , together with ICCO Systems, accomplished the design and execution works for:

- High voltage substation
- Medium and low voltage installation
- Emergency power supply
- Lighting and outlets system
- Electrical Monitoring system
- Lightning protection
- Outside facilities
- BMS and automation systems
- Maintenance and service of electrical installations, medium and low voltage network and transformer station.
- Fire detection – 2 control panels 8 loops each, 110 smoke beam detectors, 500 smoke detectors, 120 sirens
- Video surveillance – 64 input matrix, 35 fixed cameras, 14 speed dome cameras
- Intrusion detection
- Structured cabling – FO backbone cabling for 24 racks, 1500 ports, cat.6 outlets, cat.7 cabling



110/20kV Pirelli Tyres Slatina Station with 2 transformers of 25 MVA

- Design
- Construction works for 110/20 kV substation Protection and secondary circuits panels
- Commissioning

• **Contracts value : over 20 million Euro**



KRONOSPAN - world leader in production of wood panels

Romania, Germany and Belarus

ICCO Energ executed for Kronospan Romania:

- the medium voltage electrical system;
- the low voltage electrical system;
- the electrical transformer stations;
- Maintenance works.



ICCO Energ accomplished for Kronospan Germany the disassembly works of the medium and low voltage installation and of the production equipment.

ICCO Energ reassembles for Kronospan Belarus technological lines, the medium and low voltage installation disassembled from the German plant, also integrating new equipment in the low and medium voltage installations such as the electrical panels. The SCADA automation system is programmed by ICCO Energ for the production lines.

Contracts value:
13.2 million Euro



ICCO INDUSTRIAL PARK BRASOV

ICCO Industrial Park Brasov is a private Greenfield project promoted by ICCO to offer fully service business sites for medium and large sized companies for rent.

Surface: 50.000 sqm production and office areas

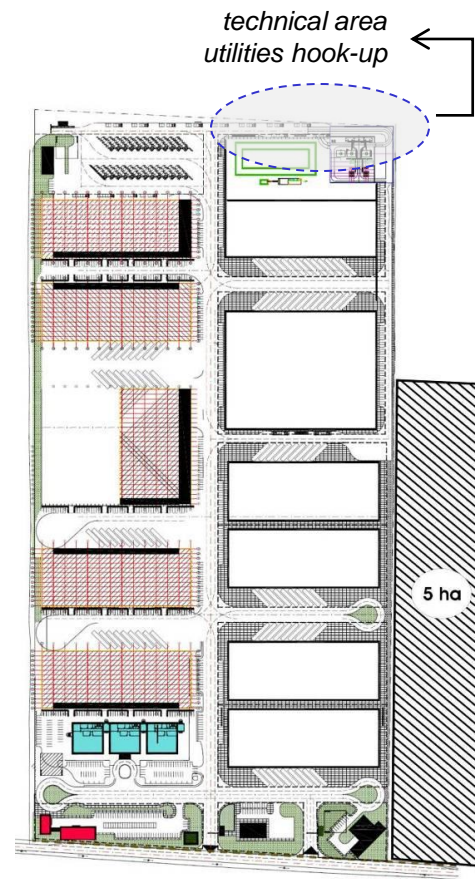
ICCO Energ, ICCO Systems and ICCO Instal accomplished:

- the electrical medium and low voltage installations and network automation system – Micro Smart Grid implementation;
- the plumbing, HVAC, rain water sewerage (Geberit system), rain water evacuation installations and the exterior rain water sewerage;
- the water supply;
- the exterior hydrants;
- high voltage substation ;
- water treatment plant.

ICCO Energ is owner and has in its own exploitation the electrical network and the 110/20 kV transformer station

Our customers in the ICCO Industrial Park are: EDS, Benchmark Electronics, Becotek , Preh Automotive and GIP International.

Investment value: 45 million Euro





CONTINENTAL POWERTRAIN BRASOV

CONTINENTAL Powertrain is a leading automotive industry supplier offering innovative and efficient powertrain system solutions into vehicles of all categories

22.000 sqm of production space and offices

ICCO Energ & ICCO Instal accomplished:

- Clean Room
- Building Management System
- the gas installation;
- the sanitary installation;
- plumbing, technical and HVAC installations;
- Fire detection – 3 control panels
- Video surveillance – 100 fixed cameras
- Access control for 34 doors
- Time & attendance
- Certified Structured Cabling
 - 4400 ports
 - Cat.6 outlets
 - Cat.7 cabling
- Maintenance works

Investment value: ca. 14 million Euro



ICCO Energy and ICCO Instal offer turn-key (consultancy, feasibility studies, design, execution, maintenance) cogeneration stations, integrating gas or diesel engines with inner combustion producing heat and energy by means of high efficiency cogeneration equipments (Combined Heat and Power).

ICCO Energy and ICCO Instal accomplished 7 cogeneration station of the former city energy and thermal agent supplier in the city of Brasov, Romania :

- inner combustion gas engines (natural gases and advanced hot water boilers), SCADA automation system, energy monitoring systems, for a total capacity of 31 MWh. The offered solution ensures the 65% reduction of emissions with immediate benefits for the inhabitants of Brasov city .

Investment value: 23 million Euro



ICCO

ENJOY YOUR BUSINESS!

AIRPORTS ROMANIAN MINISTRY OF TRANSPORT - airfield lighting and obstruction lights for airports

ICCO Energ, together with ICCO Systems - The competences in airfield services were developed with consultancy, design, execution, maintenance and servicing in the airport field, all these capabilities being certified by the Romanian Civil Aeronautic Authority (AACR..

Since 1998 our companies are certified for execution of works inside the airport for:

airfield lighting, remote control, access control, security systems, phone Exchange, access control systems, public adress systems, fire detection systems, FIDS Systems, closed circuit television systems, perimeter protection



Location	Contract value
Timisoara	3 million Euro
Baia Mare	1,5 million Euro
Cluj-Napoca	8 million Euro
Satu Mare	1,5 million Euro
Targu Mures	1,8 million Euro
Tulcea	5 million Euro
Arad	1,5 million Euro
Constanta	0,5 million Euro



Contract value: 22,8 million Euro



- **Flextronics Timisoara** - world leader in the delivery of innovative electronics manufacturing services opened a production facility in Romania in 1999 in Timisoara - execution of the electrical medium, low voltage and BMS installations and the plumbing, technical and HVAC installations;

- **Stabilus Brasov** - manufacturer of hydro-pneumatic adjustment elements (gas springs), hydraulic vibration dampers, hydraulic door stays, and automatic opening and closing systems - execution of the electrical medium and low voltage installations and all the technical-sanitary installations;

- **Hutchinson Brasov** - world market leader in rubber products on each of its three markets: automotive, industry and consumer products; it is part of TOTAL Group - execution of the technical-sanitary installations;

Civil / commercial projects

- **Hornbach Brasov** - European market leader in the field of DIY mega-stores with garden centers – is expanding its Romanian network in Brasov - execution of plumbing and HVAC installation;





Thank You for choosing

ICCO Instal

ICCO Energ

to be your business partners!